

IPHONE 3.0
iPhone 3.0 Beta
OS Walkthrough
Video



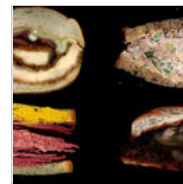
GIZ EXPLAINS
Giz Explains:
What Makes The
Five Smartphone
Platforms
Different



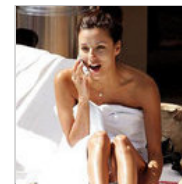
PHOTOSHOP
CONTEST
42 Even More
Ludicrous
Control Schemes
Apple Might Just
Try



APPLE
iPhone OS 3.0
Guide:
Everything You
Need to Know



LUNCH
The Genius
Behind
Scanwiches.com's
Juicy Sandwich
Porn



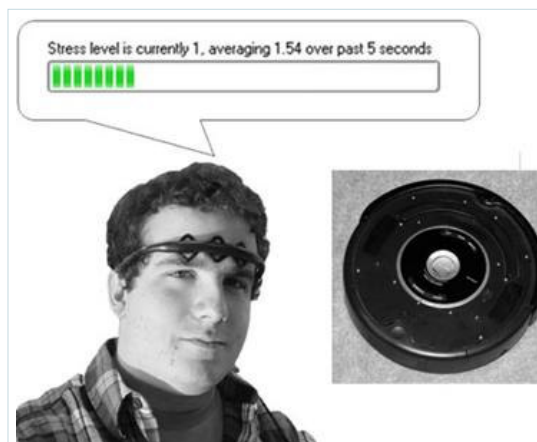
NSFW
iPhone OS 3.0
Will Turn Your
Phone Into a
Revolutionary
Sex Toy

GIZMODO THE GADGET BLOG
Display Condensed Most recent

ROBOTS

Modified Roomba Detects Stress, Runs Away When It Thinks You Might Abuse It

By Sean Fallon, 4:40 PM on Mon Mar 16 2009, 7,205 views



The last thing you need when you get home is something making noise and hovering underfoot. This modified Roomba avoids users when it detects high levels of stress.

Designed by researchers at the University of Calgary, this Roomba interacts with a commercial headband for gamers that detects muscle tension in the face. The

more tension it detects, the farther away the Roomba will hover from the subject.

The purpose of this rather simple device is to explore the potential of human and machine interaction on an emotional level. The researchers envision gadgets that approach you like a pet when it detects that you are lonely and in need of comfort. Conversely, the Roomba model could be taken a step further—imagine if it covered under the bed when you came home drunk and angry. Then, fearing for it's life, the Roomba calls 911 and gets you thrown in the slammer for appliance abuse. It could happen. [[GroupLab](#) via [MIT](#) via [BotJunkie](#)]

[Archives](#) [About](#) [Advertising](#) [Legal](#) [Help](#) [Report a Bug](#)

[Valleywag](#) [Gawker](#) [Jezebel](#) [Deadspin](#) [Defamer](#) [io9](#) [Gizmodo](#) [Kotaku](#) [Jalopnik](#) [Consumerist](#) [Lifehacker](#) This work is licensed under a [Creative Commons License](#) permitting non-commercial sharing with attribution.